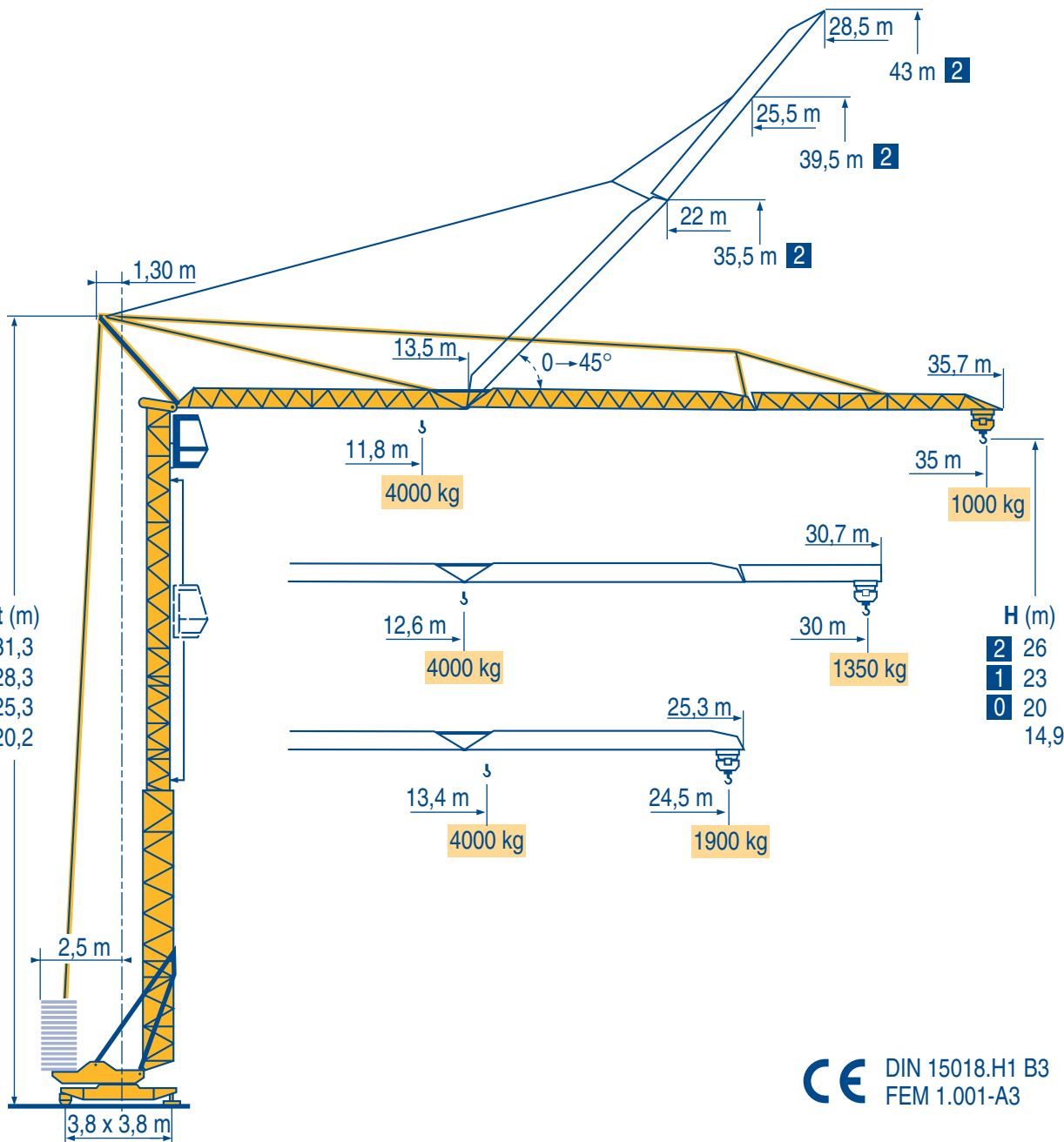


GTMR 331 B



CE DIN 15018.H1 B3
FEM 1.001-A3



Courbes de charges
Lastkurven



Load diagrams
Curvas de cargas



Curve di carico
负荷曲线



35 m	3 ▶	11,8	12	14	16	18	20	22	24	26	28	30	32	34	35 m
		4000	3940	3230	2730	2350	2060	1830	1630	1480	1350	1230	1130	1040	1000 kg

30 m	3 ▶	12,6	14	16	18	20	22	24	26	28	30 m
		4000	3520	2970	2570	2250	2000	1790	1620	1480	1350 kg

24,5 m	3 ▶	13,4	14	16	18	20	22	24,5 m
		4000	3810	3220	2780	2440	2170	1900 kg

LMQ 1

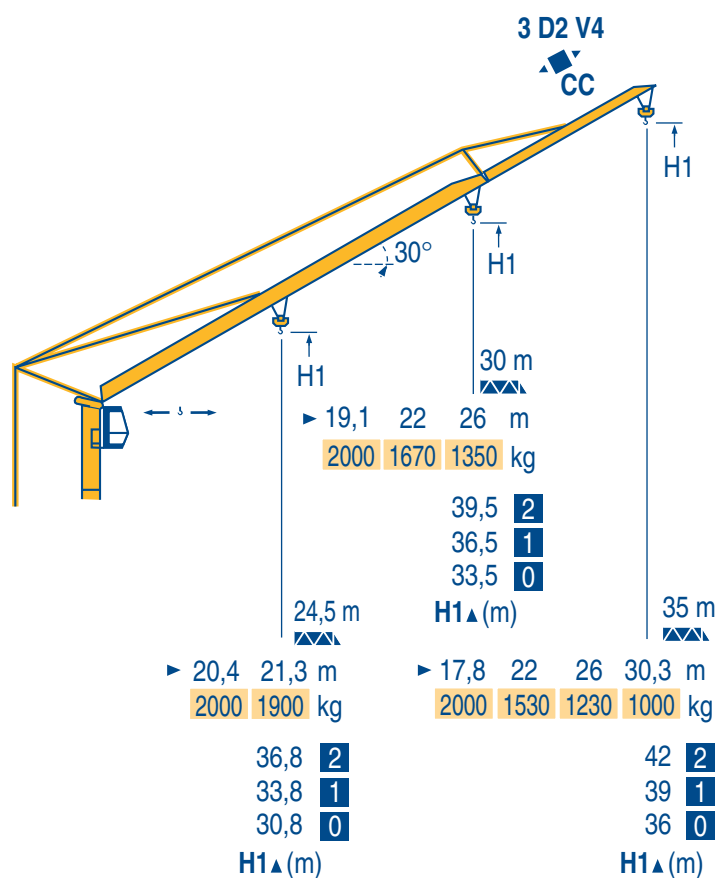
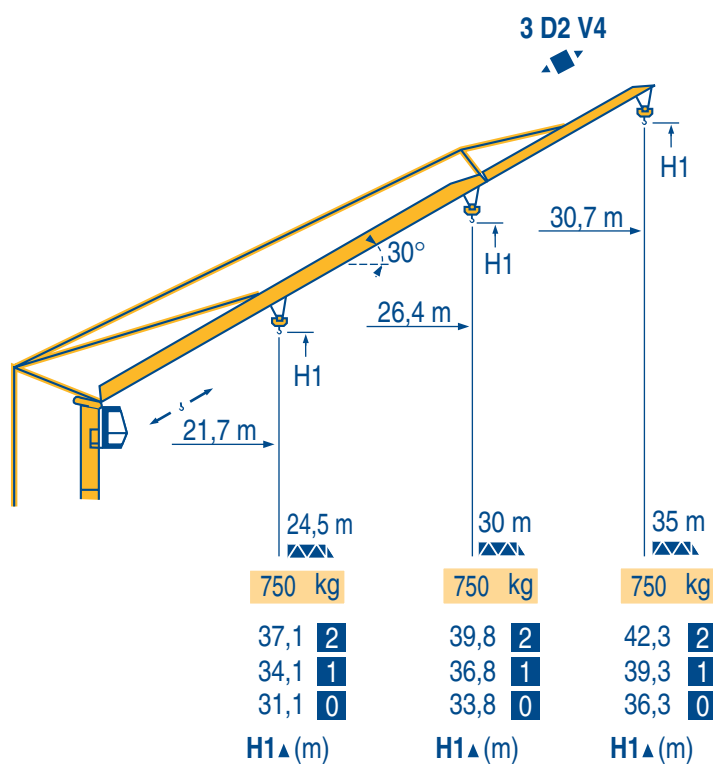
Fèche relevée
Ausleger in Steilstellung



Luffing jib
Flecha izada



Braccio impennato
起升吊臂



LMQ 1

Chariot distributeur
Chariot distributeur
et courbes de charges

F Traversing trolley
Traversing trolley
and load diagrams

GB Carrellino distributore
Carrellino distributore
e curve di carico

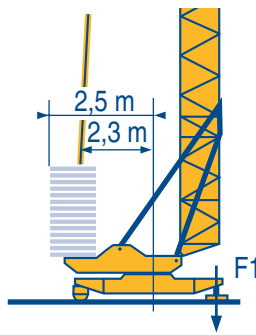


Verfahrbare Laufkatze
Verfahrbare Laufkatze
und Lastkurven

D Carro distribuidor
Carro distribuidor
y curvas de cargas

E 变幅小车
变副滑车和
负荷曲线





F1 ● 23,5 t ■ 20,5 t
▲ 13,2t

LMQ 1

● Réactions en service
■ Réactions hors service
▲ A vide sans lest ni train de transport avec flèche et hauteur maximum

● Reactions in service
■ Reactions out of service
▲ Without load, ballast or transport axles, with maximum jib and maximum height.

● Reazioni in servizio
■ Reazioni fuori servizio
▲ A vuoto, senza zavorra ne assali di trasporto con braccio massimo e altezza massima

● Reaktionskräfte in Betrieb
■ Reaktionskräfte außer Betrieb
▲ Ohne Last, Ballast und Transportachse, mit Maximalausleger und Maximalhöhe.

● Reacciones en servicio
■ Reacciones fuera de servicio
▲ Sin carga, sin lastre, ni tren de transporte, flecha y altura máxima.

● 工作状态下的反应
■ 非工作状态下的反应
▲ 空载无压重也无运输车有吊臂和最大高度

Mécanismes
Antriebe

Mechanisms
Mecanismos

Meccanismi
机构

		▲			▲			ch - PS hp	kW	
		▲	▲	▲	▲	▲	▲			
▲	15 TDPC 10	m/min	8	25	50	4	12,5	25	15	11
		kg	2000	2000	1000	4000	4000	2000		
◀ ▶	3 D2 V4	m/min	22 - 44						4	3
⦿	RCV 22	tr/min U/min rpm	0 → 0,8						3	2,2
◀ ▶	TVD 122	m/min	25						2 x 2	2 x 1,5

CEI 38	IEC 38	kVA	84/534 - 87/405
400 V (+6% -10%) 50 Hz		20 kVA	

LMQ 1

▲ Levage
◀ ▶ Distribution
⦿ Orientation
◀ ▶ Translation
▲ Conforme aux directives CEE 84/534 et 87/405 sur le niveau acoustique

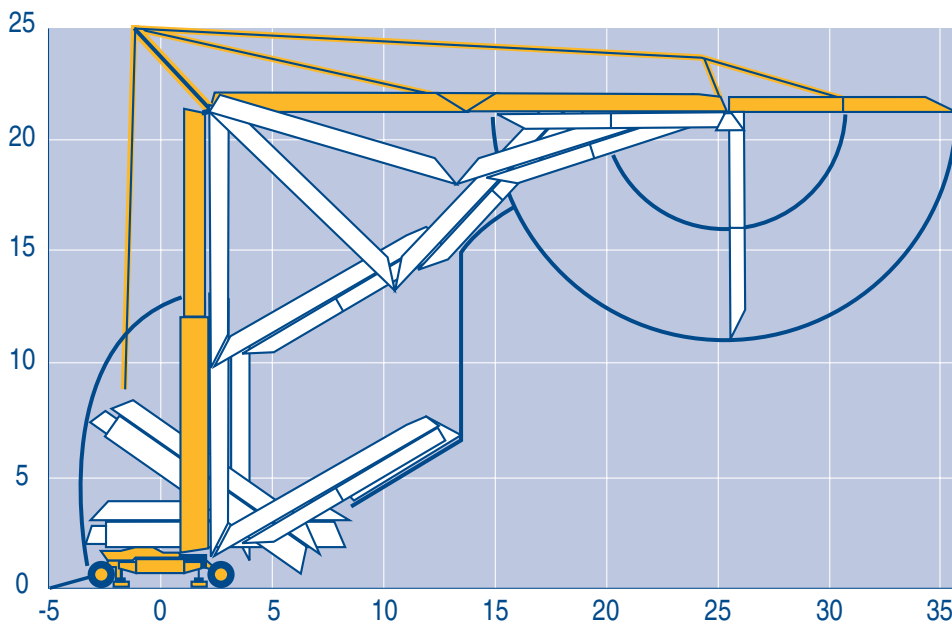
● Hoisting
■ Trolleying
● Slewing
▲ Travelling
▲ In compliance with the EEC 84/534 and 87/405 Instructions on noise level

● Sollevamento
■ Distribuzione
● Rotazione
▲ Traslazione
▲ Conforme alle direttive CEE 84/534 e 87/405 sul livello acustico

▲ Heben
◀ ▶ Katzfahren
⦿ Schwenken
◀ ▶ Kranfahren
▲ Gemäss EWG-Richtlinien 84/534 und 87/405 für den Schall-Leistungspegel

● Elevación
■ Distribución
● Orientación
▲ Traslación
▲ Conforme con las directivas CEE 84/534 y 87/405 sobre el nivel acustico

● 起升
■ 变幅
● 回转
▲ 行走
▲ 符合 CEE 84/534 - CEE 87/405 声响度规定



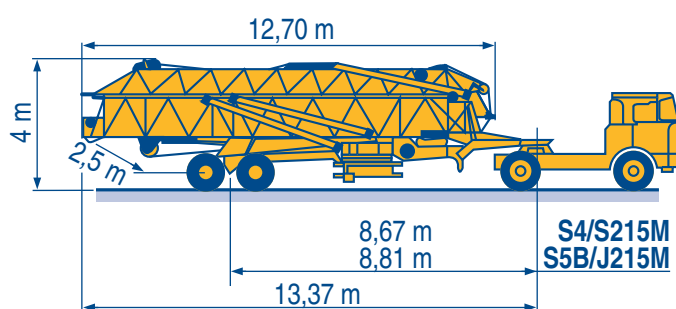
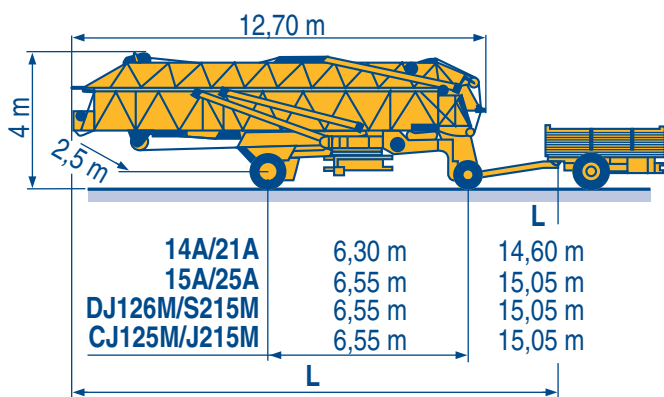
LMQ 1

Transport
Transport

F Transport
D Transporte

GB Trasporto
E 运输

I
C



14A/21A

15A/25A

DJ126M/S215M

CJ125M/J215M

S4/S215M

S5B/J215M



LMQ 1

i Automotrice : Nous consulter

F Self propelled : Consult us

GB Automotrice : Consultateci

I

i Selbstfahrkran : Auf Anfrage

D Automotriz : Consultarnos

E 请向我方咨询

C

POTAIN
 GROUPE LEGRIS INDUSTRIES

GTMR 331 B

Copyright.Reproduction interdite © POTAIN 1997

18.Rue de Charbonnières, B.P. 173-F
 69132 ECULLY Cedex
 Tél. (33)04.72.20.20.00
 Fax (33)04.72.20.20.00
 http://www.potain.fr
 E-mail : mkt@potain.fr

Deutschland
 POTAIN GmbH Tel : 06.105.704.0
Italia
 POTAIN S.p.A. Tel : 039.65.631
China
 Zhangjiagang POTAIN Tel : 520. 877.1451